



# Superintendent's Updates



August 6, 2024



# Student/Teacher Ratios

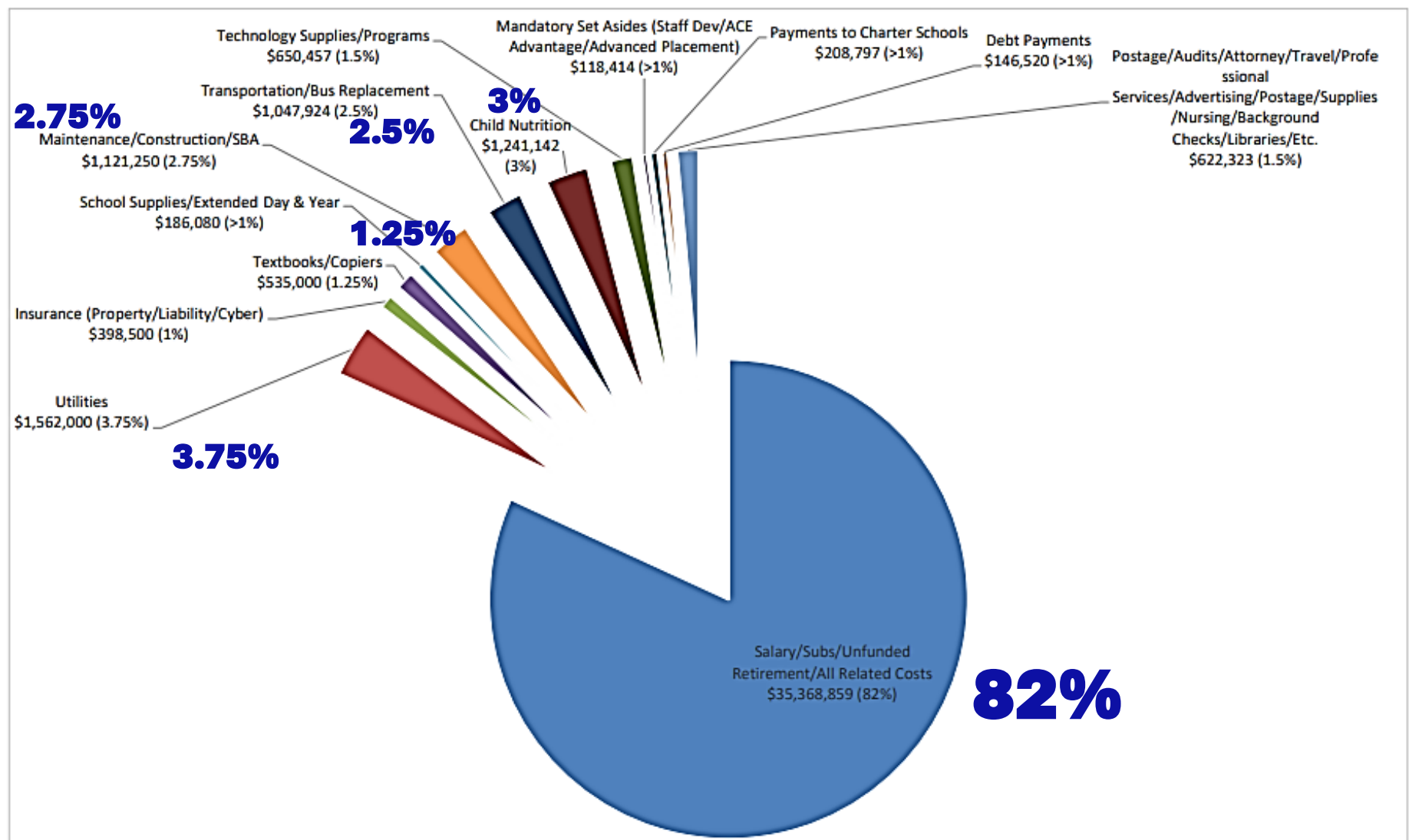
School	Student Population	Professional	Student/Teacher Ratio	Student: Administrator Ratio	2022-23 Pupil Expenditure per School
ALC	12	1	12:01	-	\$ 15,725.88
Beverly	242	21	11.5:01	242:1	\$ 13,194.90
Colton	158	13.5	11.7:1	158:1	\$ 13,642.73
EHS	743	49	15.2:1	247.7:1	\$ 10,857.24
EMS	573	47	12.2:1	191:1	\$ 12,110.04
George Ward	311	26	12:1	311:1	\$ 12,692.55
Harman	116	13	8.9:1	116:1	\$ 16,214.65
Jennings	218	18	12.1:01	218:1	\$ 13,352.33
Midland	156	14	11.1:1	156:1	\$ 15,021.97
North	197	19	10.4:1	181:1	\$ 13,528.86
Pickens	26	4.5	5.8:1	52:1	\$ 22,387.49
Third Ward	307	29	10.6:1	274:1	\$ 13,671.79
TVMHS	398	34	11.7:1	199:2	\$ 13,102.29

\*Ratio includes all professional staff including special education, Title 1, school counselors, nurses, etc.

\*\*Ratio does not include principals and assistant principals

2024-25 Enrollment Numbers As of July 1, 2024

# RCS Budget Expenditures



## Randolph County Schools General Fund Budget FY25



# **RCS Special Education Audit**

**August 30, 2024 - Entrance Conference**

**September 3 & 4, 2024 - Onsite Monitoring**

**September 9, 2024 - WVDE Exit Conference**







# **RCS Leading with Purpose**

**Randolph County Schools'  
purpose is to prepare  
today's learners for  
tomorrow's demands.**

# RCS Leading with Purpose



**Organizational Wellness**



**Organizational Effectiveness and Efficiency**



**Preparing Future Ready Students**



# RCS Leading with Purpose



**Organizational  
Wellness**

## Primary Focus: **Communication**

- Standardize Expectations
  - Timelines for Responses
  - Etiquette & Professionalism
  - Emotionally Intelligent
  - Accuracy/Grammar
  - Customer Service Oriented
  - Uniform Type of Communication
  - Accountability (Follow through)



# RCS Leading with Purpose



**Organizational  
Effectiveness  
and Efficiency**

Primary Focus:

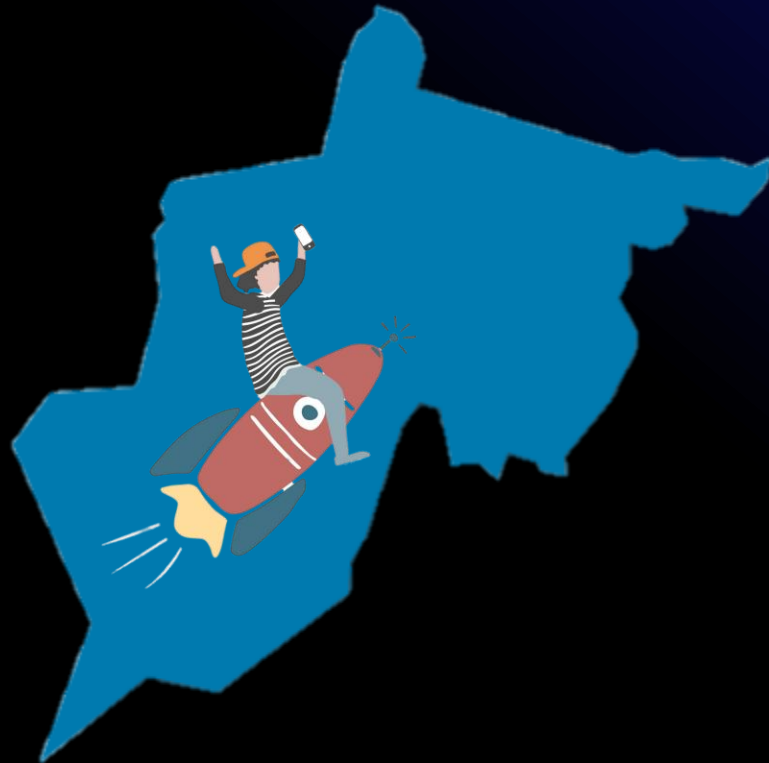
## **Processes**

- Systems Automation
- Authority
- Transparency
- Interdepartmental Collaborations
- Accountability





# RCS Leading with Purpose



**Preparing  
Future  
Ready  
Students**

Primary Focus:  
**Data-based Decision  
Making**

- Continuous School Improvement
  - Academic Integrity
  - Teacher Quality
  - Data Utilization
  - Accountability
  - Inclusion
  - Digital Learning
- Future Ready Schools

# Lead with Purpose



Randolph County Schools  
Pursuit of Excellence

Finding Purpose

The complex block features a blue background with a large, light-blue silhouette of North Carolina. Overlaid on this are five circular icons. The top-left icon is a red and blue circle containing the Randolph County Schools logo, which includes a map of the county and the text "Randolph County Schools" and "Pursuit of Excellence". The middle-left icon is a purple circle showing a person in a blue uniform climbing a blue mountain with a flag on top. The top-right icon is a red circle showing a group of people holding up puzzle pieces. The middle-right icon is a red circle showing a group of people working with gears. The bottom-right icon is a purple circle showing a person launching a red and white rocket.



# RCS Interesting News

## Re-Distribution of Happiness



Lowell Joerg  
Stockton, CA /



HIGH SCHOOL, ELKINS, W. VA.







FOR WRITING MESSAGES.

PUBLISHED BY F. ROBBINS & SON, PITTSBURGH, PA. MADE IN U. S. A.

From a friend  
of yours 20 hrs

16000

POST CARD

THIS SIDE IS FOR THE ADDRESS

UNITED STATES  
AND CANADA  
ONE CENT  
PLACE  
STAMP HERE  
FOREIGN  
TWO CENTS

Randson

Mr Orval Taylor

Mill Creek

West. Va





# Questions?